

Master Majors for 2026 Intake

Majors with ★ are supported by CSC-Chinese University Program

Self-supported applicants, NPU President Scholarship applicants and Xi'an City 'The Belt and Road' International Students Scholarship applicants can apply all majors listed below.

School	Major	Medium
School of Aeronautics	Flight Vehicle Design★	English
	Aircraft Structures and Airworthiness Technology★	English
	Fluid Mechanics★	English
School of Astronautics	Aeronautical and Astronautical Science and Technology★	English
	Control Science and Engineering★	English
School of Marine Science and Technology	Naval Architecture and Ocean Engineering★	English
	Control Science and Engineering★	English
School of Materials Science and Engineering	Materials Processing Engineering★	English
	Materials Science★	English
School of Mechanical Engineering	Mechanical Engineering★	English
	Design Science	English
School of Mechanics and Transportation Engineering	Mechanics	English/Chinese
	Architecture	Chinese
School of Power and Energy	Power Engineering and Engineering Thermalphysics	English
School of Electronics and Information	Information and Communication Engineering★	English/Chinese
	Electronics Science and Technology★	English
School of Automation	Control Science and Engineering★	English
	Electrical Engineering	English
School of Computer Science and Technology	Computer Science and Technology★	English
School of Mathematics and Statistics	Mathematics	English
School of Physical Science and Technnology	Materials Physics and Chemistry	English
	Optical Engineering	English
	Optics	English
School of Physical Science and Technnology	Condensed Matter Physics	English

School	Major	Medium
School of Chemistry and Chemical Engineering	Chemical Technology	English
	Applied Chemistry	English
	Polymer Chemistry And Physics	English
	Organic Chemistry	English
	Materials Science★	English
School of Management	Management Science and Engineering★	English
	Business Administration	English
School of Public Policy and Administration	Public Administration	English/Chinese
	Applied Economics	English/Chinese
	Science of Law	English/Chinese
School of Software	Software Engineering★	English/Chinese
School of Life Sciences	Biomedical Engineering	English
School of Foreign Studies	Foreign Linguistics and Applied Linguistics	English
	English Language and Literature	English
School of Marxism	Research on the Basic Issues of Modern Chinese History	English/Chinese
	The basic principles of Marxism	Chinese
	Ideological and Political Education	Chinese
School of Cybersecurity	Cybersecurity	English
School of Civil Aviation	Aeronautical and Astronautical Science and Technology★	English
	Mechanics	English
School of Ecology and Environment	Ecology	Chinese
Institute of Flexible Electronics	Materials Science★	English
	Biomedical Engineering	English

● Specific requirements for some schools are available on official website.

PhD Majors for 2026 Intake

Majors with ★ are supported by CSC-Chinese University Program

Self-supported applicants, NPU President Scholarship applicants and Xi'an City 'The Belt and Road' International Students Scholarship applicants can apply all majors listed below.

School	Major	Medium
School of Aeronautics	Flight Vehicle Design★	English
	Aircraft Structures and Airworthiness Technology★	English
	Fluid Mechanics★	English
School of Astronautics	Aeronautical and Astronautical Science and Technology★	English
	Control Science and Engineering★	English
School of Marine Science and Technology	Naval Architecture and Ocean Engineering★	English
School of Materials Science and Engineering	Materials Processing Engineering★	English
	Materials Science★	English
	Mechanical Engineering★	English
School of Mechanical Engineering	Design Science	English
School of Mechanics and Transportation Engineering	Mechanics	English/Chinese
School of Power and Energy	Power Engineering and Engineering Thermalphysics	English
School of Electronics and Information	Information and Communication Engineering★	English/Chinese
	Electronics Science and Technology★	English
School of Automation	Control Science and Engineering★	English
	Electrical Engineering	English

School	Major	Medium
School of Computer Science and Technology	Computer Science and Technology★	English
School of Mathematics and Statistics	Mathematics	English
School of Physical Science and Technnology	Physics	English
School of Chemistry and Chemical Engineering	Chemistry	English
School of Management	Management Science and Engineering	English
	Business Administration	English
School of Software	Software Engineering★	English/Chinese
School of Life Sciences	Biomedical Engineering	English
School of Foreign Studies	Foreign Linguistics and Applied Linguistics	English
School of Marxism	Theory of Marxism	Chinese
School of Cybersecurity	Cybersecurity	English
School of Civil Aviation	Aeronautical and Astronautical Science and Technology★	English
School of Ecology and Environment	Ecology	Chinese
Institute of Flexible Electronics	Materials Science★	English
	Chemistry	English
	Biomedical Engineering	English



Chinese Government Scholarship (University Code:10699) Type A/Type B

- **Coverage:** Tuition fee, Insurance, Accommodation and Stipend: **Master:** 3000 CNY/Month **PhD:** 3500 CNY/Month

NPU President Scholarship

- **First level coverage:** Tuition fee, Accommodation and Stipend: **Master:** 2000 CNY/Month **PhD:** 3500 CNY/Month
- **Second level coverage:** Tuition
- **Third level coverage:** 50% Tuition

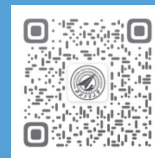
All Scholarship students must pass the annual review. Xi'an City 'The Belt and Road' International Students Scholarship is only given in the first year.

Xi'an City 'The Belt and Road' International Students Scholarship

- **First Level Coverage:** Tuition fee, Accommodation and Stipend: **Master:** 2000 CNY/Month **PhD:** 3500 CNY/Month

- **Second Level Coverage:** Tuition fee and Stipend: **Master:** 2000 CNY/Month * 10 months **PhD:** 3500 CNY/Month * 10 months

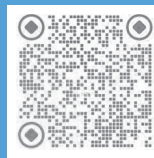
- **Third Level Coverage:** 50%Tuition fee and Stipend: **Master:** 2000 CNY/Month * 10 months **PhD:** 3500 CNY/Month * 10 months



Website



Wechat



Facebook



Instagram



WhatsApp



LinkedIn

Contact Us

Admissions Office
International College
Northwestern Polytechnical University

Website: <https://studyat.nwpu.edu.cn/>

Application Portal: <https://admission.nwpu.edu.cn/>

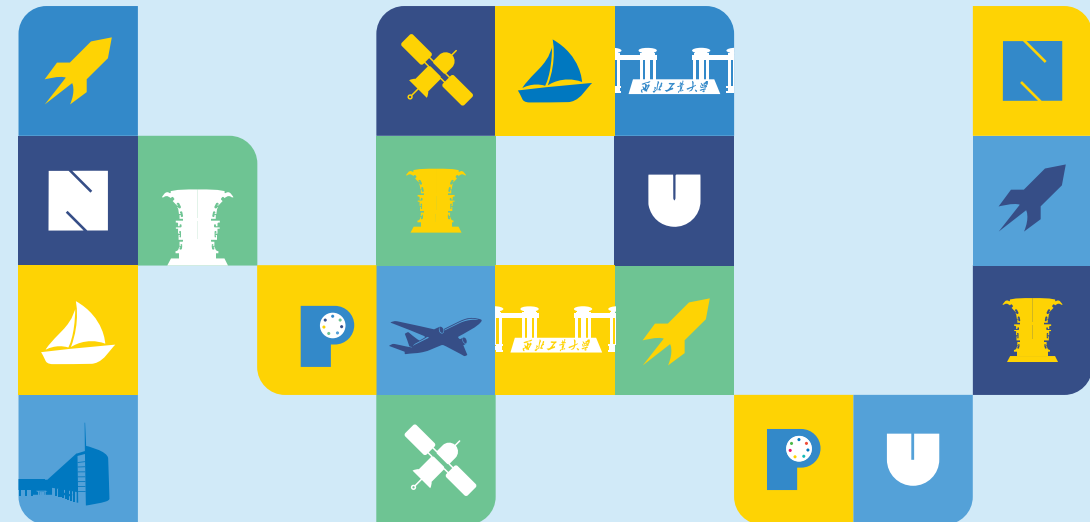
Tel: 86-29-88494381

Email: internationalcollege@nwpu.edu.cn

NOTES:

- All dates mentioned above are Beijing Time (GMT+8).
- Please refer to NPU International College website for updates.
- The Admissions Office of NPU International College reserves the right of final interpretation of this guide.

POSTGRADUATE
PROGRAM
APPLY



Northwestern
Polytechnical University
Since 1938

A Top Engineering
University in China



Located in the historical and ancient city of Xi'an, **Northwestern Polytechnical University (NPU)** ranks as a **Category A university**, as it evolves rapidly with **state-of-the-art innovation technologies**.

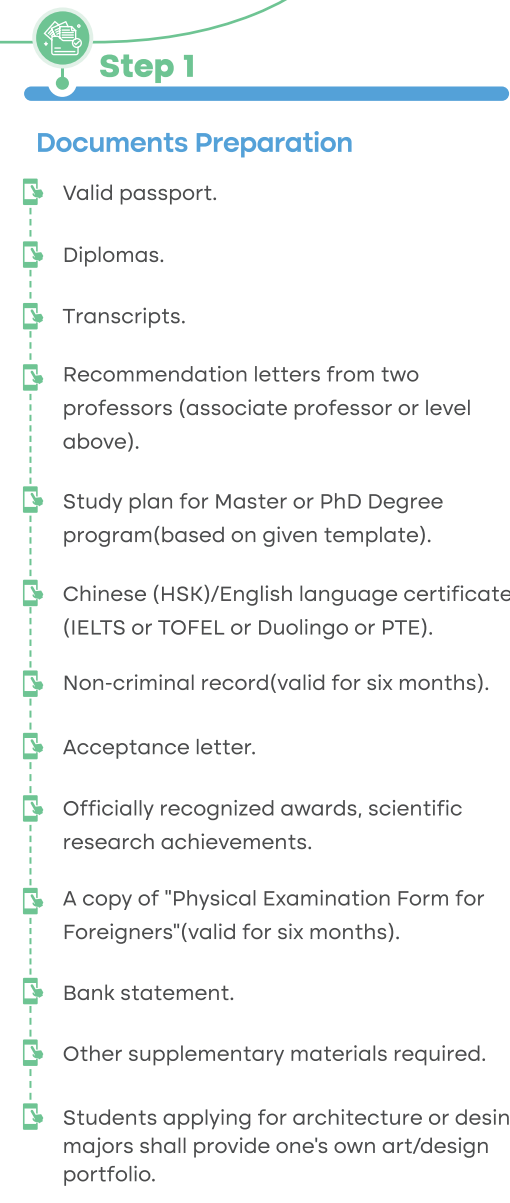
Drawing on its deep moral, intellectual and spiritual roots to promote world scientific and technological progress, NPU maintains the determination to reform and innovate, and builds its strength and strive for excellence. Looking into the future, NPU aims to keep pushing back the frontiers of knowledge, opening new vistas of intellectual inquiry and turning inspiration into reality as it builds a world-class university with a global reputation in the field of engineering.

EMPOWERING MINDS & TRANSFORMING TECHNOLOGY

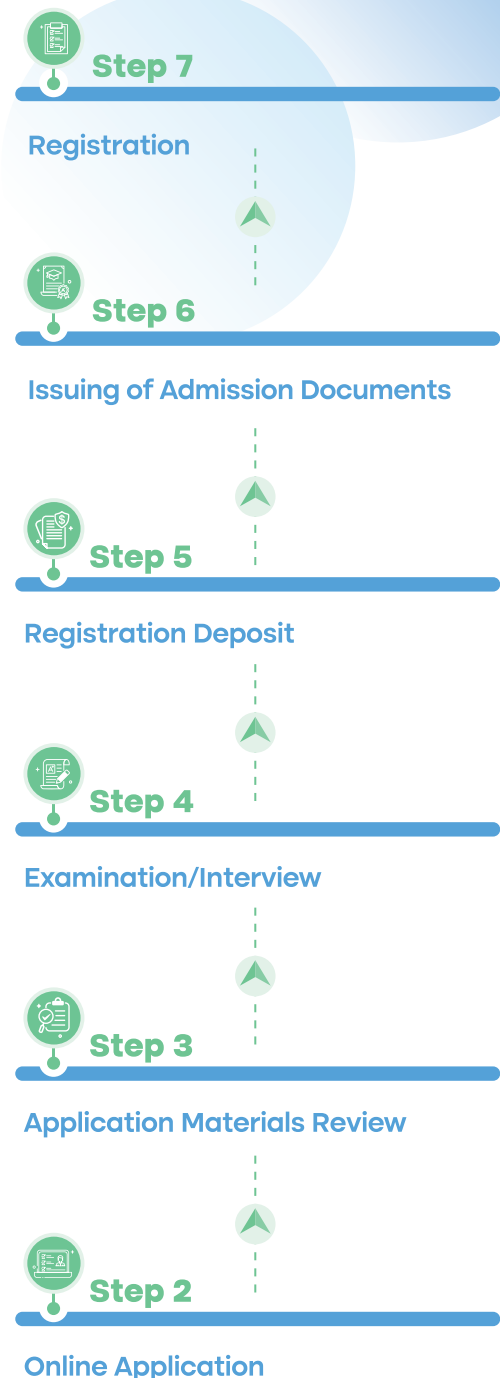
NPU - World Reputation



Application and Selection Procedure



- All above mentioned documents must be original or notarized one in English or Chinese.
- Specific standard available on official website.



Fees

Program	Master	PhD
Tuition Fee	Chinese Medium: 30000 CNY/Year English Medium: 33000 CNY/Year	Chinese Medium: 38000 CNY/Year English Medium: 42000 CNY/Year
Application Fee (Non-refundable)	600 CNY/90USD	600 CNY/90 USD
Health Insurance Fee	800 CNY/Year or 1000CNY/Year	800 CNY/Year or 1000 CNY/Year
Accommodation Fee	7200 CNY/Year or 9000 CNY/Year (Double Room)	7200 CNY/Year or 9000 CNY/Year (Double Room) 10800 CNY/Year (Single Room)

Application Period

- The first batch: November 1, 2025 - January 15, 2026
- The second batch: January 16, 2026 - February 28, 2026
- The third batch: March 1, 2026 - March 31, 2026
- The fourth batch: April 1, 2026 - April 30, 2026

CSC Type B Scholarship application deadline is February 28, 2026. Applicants are encouraged to apply early to have a higher chance of receiving a scholarship.

Admission Requirements

Good physical and mental health

Applicants for doctoral program should be under 35 by September 1 st, 2026. Applicants for Master program should be under 30 by September 1 st, 2026.

Academic Requirement

By September 1st, 2026, applicants for doctoral program must hold a master's degree, and applicants for master program must hold a bachelor's degree.

Learning Ability

Applicants should have good learning ability and academic performance. The requirement for previous academic grade level is an average score of 75% and above. For CSC scholarship applicants, the requirement for previous academic grade level is an average score of 80% and above. Applicants may provide other evidence of academic ability, such as the GRE and GMAT scores.

Language Requirement

Applicants should have Chinese or English language proficiency that meets the requirement.

Medium	Requirement
Chinese	HSK Level 5 (200 or above)
English	IELTS Academic Test overall 6.5 or above (no less than 5.5 in each element) TOEFL 90 or above (iBT/iBT Home Edition/MyBest Scores, DI code C317) Duolingo English Test (120 or above) PTE Academic 60 or above

Nationality Requirements

The applicant must be a non-Chinese citizen with a valid passport. Specific standard available on official website.